



UNIVERSITY
OF WARSAW



UNIVERSITY OF WARSAW

- founded in 1816
- the largest university in Poland and the best research centre in the country
- occupies 1st place in the national rankings of universities
- belongs to the top 3% of universities in the world according to global rankings such as Times Higher Education World University Ranking (THE), Quacquarelli Symonds World University Ranking (QS), Academic Ranking of World Universities (ARWU)
- holds very good positions in international comparative evaluations of the quality of education: 17 programmes provided by UW have been listed in QS World University Rankings by Subject 2019; 11 subjects run by UW were ranked in the Shanghai Ranking of Academic Subjects 2019 (Physics and Mathematics were ranked 51-75 worldwide)
- belongs to the 4EU+ European University Alliance selected by the European Commission for funding in the 'European Universities' call for proposals, launched as part of the 2019 Erasmus+ programme
- awarded the "HR Excellence in Research" title by the European Commission for adopting the principles of the European Charter for Researchers, which means that UW offers a friendly working environment and transparent recruitment procedure
- distinguished by the European Commission for its participation in the Erasmus+ programme

4eu+

4EU+

ALLIANCE

FACTS & FIGURES

The 4EU+ Alliance is among the consortia selected by the European Commission for funding in the first pilot 'European Universities' call for proposals, launched as part of the 2019 Erasmus+ programme.

MEMBERS

- University of Warsaw, POLAND
- Charles University, PRAGUE, CZECHIA/CZECH REPUBLIC
- Heidelberg University, GERMANY
- University of Copenhagen, DENMARK
- Sorbonne University, FRANCE
- University of Milan, ITALY

MISSION

The 4EU+ Alliance is based on a shared vision for a European University that embraces academic values, ensures equitable access to education, and shapes the next generations of open-minded and critical-thinking citizens to be ready to face and solve global challenges. The 4EU+ mission is to develop a barrier-free and continuously deepening cooperation in education, research, mobility and innovation within the Alliance. To achieve these goals, 4EU+ has defined a set of key actions:

- Setting up common research-based core curricula,
- Defining and developing shared skills, competencies and values (Multilingualism, Data literacy, Critical thinking, Entrepreneurship, Social engagement),
- Promoting student and staff mobility.





**IN 4EU+, WE CARRY OUT
WORLD-CLASS RESEARCH WITHIN
THE FOLLOWING FOUR FLAGSHIP
AREAS:**

- Health and demographic change in an urban environment,
- Europe in a changing world: Understanding and engaging societies, economies, cultures and languages,
- Transforming science and society by advancing information, computation and communication,
- Biodiversity and sustainable development.

23 ASSOCIATED PARTNERS

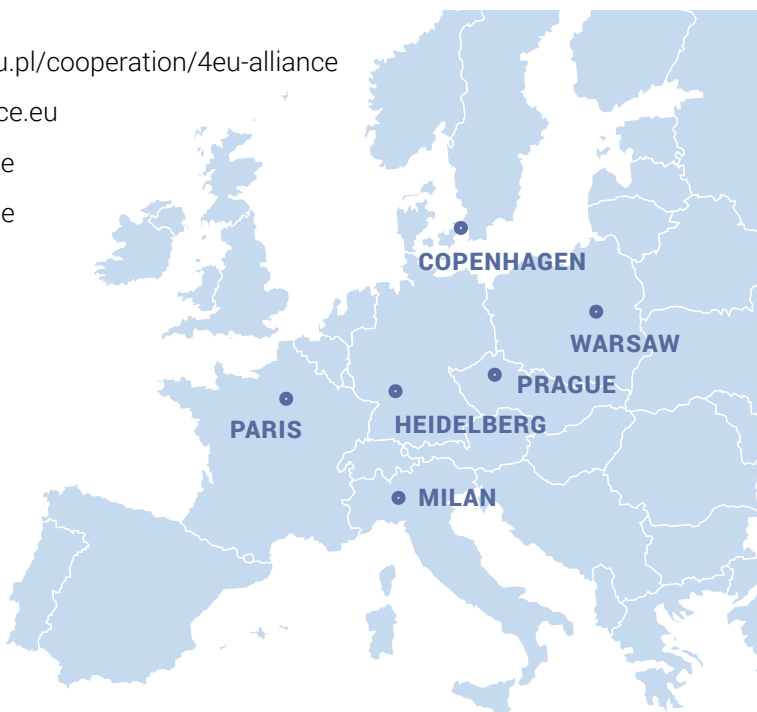
- business organisations, including Cap Digital, SAP SE, Suez, and Ricoh,
- NGOs, among them European Environment Bureau, and Robert Schuman Foundation,
- associations of entrepreneurs,
- regional authorities: Cities of Warsaw, Prague, Copenhagen and Rhein-Neckar Metropolitan Region.

🏠 www.en.uw.edu.pl/cooperation/4eu-alliance

🏠 www.4eualliance.eu

🐦 4EUplusAlliance

📺 4EUplusAlliance





UW FACTS & FIGURES

- Faculty of Applied Linguistics
- Faculty of Applied Social Sciences and Resocialisation
- Faculty of “Artes Liberales”
- Faculty of Biology
- Faculty of Chemistry
- Faculty of Economic Sciences
- Faculty of Education
- Faculty of Geography and Regional Studies
- Faculty of Geology
- Faculty of History
- Faculty of Journalism, Information and Book Studies
- Faculty of Law and Administration
- Faculty of Management
- Faculty of Mathematics, Informatics and Mechanics
- Faculty of Modern Languages
- Faculty of Oriental Studies
- Faculty of Philosophy and Sociology
- Faculty of Physics
- Faculty of Polish Studies
- Faculty of Political Science and International Studies
- Faculty of Psychology

UW is a public, comprehensive and research intensive university. It provides education and carries out research in the fields of humanities, social and natural sciences, as well as numerous interdisciplinary projects, including subjects in medical or technical sciences.

7 300 employees

42 500 students

2 900 doctoral students

4 900 international students and doctoral students

UW is an institution open to the international community. It aims to be an attractive and friendly place for international researchers and students. It is most popular among students from Belarus, China, France, Germany, Italy, Spain, Turkey and Ukraine.

21 faculties

30 academic and research units

4 Doctoral Schools

- Doctoral School of Humanities
- Doctoral School of Social Sciences
- Doctoral School of Exact and Natural Sciences
- Interdisciplinary Doctoral School



EDUCATION

The quality of education at UW is confirmed by the annual appraisals which show that the majority of students are satisfied with their selection of the university and the education programme. The University's strongest points are: its prestige, development opportunities, the study environment. The quality of education is also confirmed by research conducted with the University's graduates. Results demonstrate that having a diploma from UW is a definite asset in the job market; 94% of respondents have found employment after graduation.

over **100** programmes of 1st, 2nd and long cycle – uniform Master's studies

27 English-language programmes

29 double degree programmes run by UW and international partners

interdisciplinary programmes that enable students to develop their curriculum individually

programmes of doctoral studies in **4** Doctoral School

each doctoral student has an opportunity to follow a complete learning pathway in English

over **120** postgraduate programmes

Master of Business Administration (MBA) and Master of Law (LLM) programmes

Open University courses

27 ENGLISH-LANGUAGE PROGRAMMES

- American studies (1st, 2nd cycle)
- Archaeology (1st, 2nd cycle)
- Chemistry (2nd cycle)
- Cognitive Science (2nd cycle)
- Data Science and Business Analytics (2nd cycle)
- English Studies (1st, 2nd cycle)
- Environmental Management (2nd cycle)
- European Politics and Economics (1st cycle)
- Finance, International Investments and Accounting (1st cycle)
- Humanitarian Action (2nd cycle)
- International Business Program (2nd cycle)
- International Economics (2nd cycle)
- International Relations (1st, 2nd cycle)
- International Studies in Philosophy (1st cycle)
- Master in Food Systems (2nd cycle)
- Oriental Studies – Inner Asia: Mongolian and Tibetan Studies (2nd cycle)
- Physics (2nd cycle)
- Political Science (1st, 2nd cycle)
- Psychology (uniform Master's cycle)
- Quantitative Finance (2nd cycle)
- Sustainable Development (2nd cycle)
- Teaching English to Young Learners (2nd cycle)



RESEARCH

UW is a Polish leader in attracting external funding for research – both under the European Union and domestic grant schemes.

3 700 academic teachers

2 900 doctoral students

100-million-euro research budget (1/3 of the university budget)

3 250 research topics

1 600 projects financed from national or international research grants

over **50** Horizon 2020 grants

14 European Research Council grants

16 spin-off companies

1 000 international partners

530 universities that work with UW under bilateral agreements

100 international societies and research networks with UW as a member

RESEARCH ON SOCIALLY IMPORTANT ISSUES

UW scientists conduct research on socially important issues in cooperation with scientific centres from all over the world. In addition to the flagship programmes under the 4EU+ Alliance, such projects include those implemented within the EIT Food – European Knowledge and Innovation Community in the food sector, which forms part of the European Institute of Innovation and Technology. UW has been a member of EIT Food since 2016.

In 2018, UW also initiated a project under the framework of yet another EU Knowledge and Innovation Community – EIT Climate, whose objective is to mitigate and adapt to the consequences of climate change.

COMMON ACADEMIC UNITS WITH INTERNATIONAL PARTNERS

- Center for Andean Studies in Cusco, partner: Universidad Nacional de San Antonio abad del Cusco, Peru
- Centre for Quantum Optical Technologies – International Research Agenda, partner: University of Oxford, UK
- Center for Research and Practice in Cultural Continuity, partners: University of London, UK; Universiteit Leiden, the Netherlands; Max-Planck-Institut für Menschheitsgeschichte in Jena, Germany; Rijksuniversiteit Groningen, the Netherlands
- Regenerative Mechanisms for Health – International Research Agenda, partner: University Medical Center Göttingen, Germany



DEVELOPMENT

UW continues to pursue the following strategic objectives:

- strengthening the position as a Poland's leading research centre,
- gaining international recognition,
- maintaining its high ranking among the Central European universities and developing cooperation with the continent's top universities,
- continuing a strong impact on its environment, in particular by addressing socially significant research topics.

MULTI-ANNUAL DEVELOPMENT PLAN

UW is implementing the multi-annual development plan "University of Warsaw 2016-2025." Its main objective is:

- to enhance the potential of the humanities and social sciences and to integrate them into innovative experimental programmes,
- to strengthen the international position of the university and increase its role in fostering social and economic transformations.

To facilitate reaching of these goals, the programme includes the construction of new buildings and the expansion and reconstruction of existing facilities (a total of 18 investment projects).

INTEGRATED DEVELOPMENT PROGRAMME

2018 marked the beginning of the implementation of the university's four-year Integrated Development Programme (ZIP).

The programme is designed to support the comprehensive development of the university and includes:

- development of new fields of study and modification of existing curricula,
- enriching the range of curricula, courses and scholarship programmes for doctoral students,
- organization of classes and training sessions to improve the skills of students and employees,
- development of university management IT tools.





POLAND

– the 7th largest country in Europe, a member of the European Union, the Schengen Area, the European Higher Education Area and the Bologna Process

WARSAW

– the capital city of Poland, the political, economic, social and cultural centre of the country, one of the most dynamically developing cities in Europe



ADMISSIONS OFFICE

🏠 www.rekrutacja.uw.edu.pl/en

INTERNATIONAL RELATIONS OFFICE

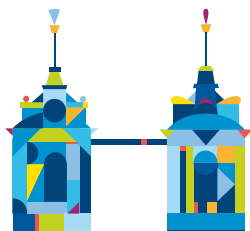
🏠 www.iro.uw.edu.pl

OFFICE FOR INTERNATIONAL RESEARCH AND LIAISON

🏠 www.bmpb.uw.edu.pl

WELCOME POINT

🏠 www.welcome.uw.edu.pl



UNIVERSITY OF WARSAW

Krakowskie Przedmieście Street 26/28

00-927 Warsaw

(+48) 22 55 20 000

🏠 www.en.uw.edu.pl

🐦 UniWarszawski

f fanpageUW



HR EXCELLENCE IN RESEARCH