



UNIVERSITY  
OF WARSAW



# UNIVERSITY OF WARSAW

- founded in 1816
- the largest university in Poland and the best research centre in the country
- was granted research university status for 2020-2026
- belongs to the top 3% of universities in the world according to global rankings such as Times Higher Education World University Ranking (THE), Quacquarelli Symonds World University Ranking (QS), Academic Ranking of World Universities (ARWU)
- holds very good positions in international comparative evaluations of the quality of education: 19 programmes provided by UW have been listed in QS World University Rankings by Subject 2020; 12 subjects run by UW were ranked in the Shanghai Ranking of Academic Subjects 2020 (Physics was ranked 51-75 worldwide, Mathematics – 76-100)
- belongs to the 4EU+ European University Alliance selected by the European Commission for funding in the 'European Universities' call for proposals, launched as part of the 2019 Erasmus+ programme
- awarded the "HR Excellence in Research" title by the European Commission for adopting the principles of the European Charter for Researchers, which means that UW offers a friendly working environment and transparent recruitment procedure
- distinguished by the European Commission for its participation in the Erasmus+ programme

4eu+

# 4EU+

# ALLIANCE

## FACTS & FIGURES

The 4EU+ Alliance is among the consortia selected by the European Commission for funding in the first pilot 'European Universities' call for proposals, launched as part of the 2019 Erasmus+ programme.

### MEMBERS

- University of Warsaw, POLAND
- Charles University, PRAGUE, CZECHIA/CZECH REPUBLIC
- Heidelberg University, GERMANY
- University of Copenhagen, DENMARK
- Sorbonne University, FRANCE
- University of Milan, ITALY

### MISSION

The 4EU+ Alliance is based on a shared vision for a European University that embraces academic values, ensures equitable access to education, and shapes the next generations of open-minded and critical-thinking citizens to be ready to face and solve global challenges. The 4EU+ mission is to develop a barrier-free and continuously deepening cooperation in education, research, mobility and innovation within the Alliance. To achieve these goals, 4EU+ has defined a set of key actions:

- Setting up common research-based core curricula,
- Defining and developing shared skills, competencies and values (Multilingualism, Data literacy, Critical thinking, Entrepreneurship, Social engagement),
- Promoting student and staff mobility.







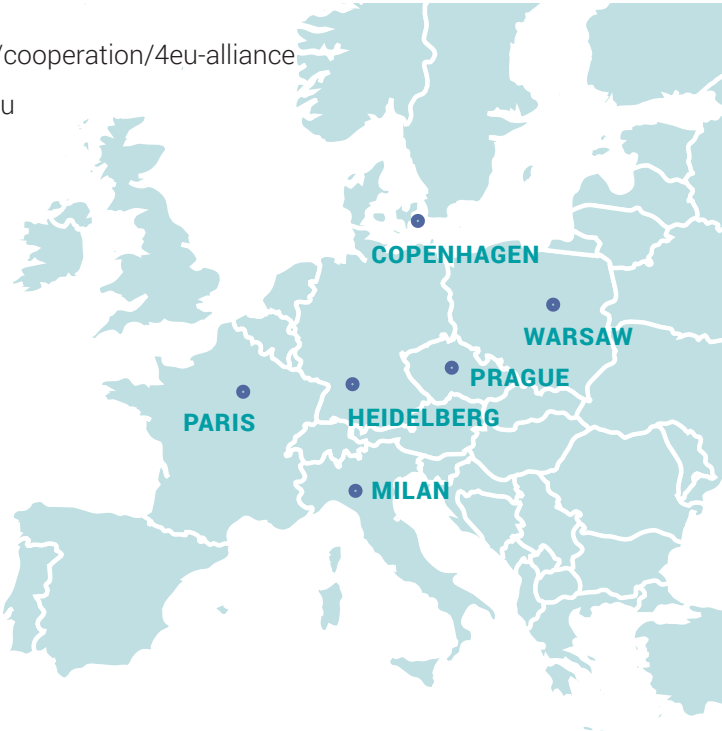
**IN 4EU+, WE CARRY OUT  
WORLD-CLASS RESEARCH WITHIN  
THE FOLLOWING FOUR FLAGSHIP  
AREAS:**

- Health and demographic change in an urban environment,
- Europe in a changing world: Understanding and engaging societies, economies, cultures and languages,
- Transforming science and society by advancing information, computation and communication,
- Biodiversity and sustainable development.

**23 ASSOCIATED PARTNERS**

- business organisations, including Cap Digital, SAP SE, Suez, and Ricoh,
- NGOs, among them European Environment Bureau, and Robert Schuman Foundation,
- associations of entrepreneurs,
- regional authorities: Cities of Warsaw, Prague, Copenhagen and Rhein-Neckar Metropolitan Region.

- 🏠 [www.en.uw.edu.pl/cooperation/4eu-alliance](http://www.en.uw.edu.pl/cooperation/4eu-alliance)
- 🏠 [www.4eualliance.eu](http://www.4eualliance.eu)
- 🐦 4EUplusAlliance
- 📺 4EUplusAlliance





- Faculty of Applied Linguistics
- Faculty of Applied Social Sciences and Resocialisation
- Faculty of Archeology
- Faculty of “Artes Liberales”
- Faculty of Biology
- Faculty of Chemistry
- Faculty of Culture and Arts
- Faculty of Economic Sciences
- Faculty of Education
- Faculty of Geography and Regional Studies
- Faculty of Geology
- Faculty of History
- Faculty of Journalism, Information and Book Studies
- Faculty of Law and Administration
- Faculty of Management
- Faculty of Mathematics, Informatics and Mechanics
- Faculty of Modern Languages
- Faculty of Oriental Studies
- Faculty of Philosophy
- Faculty of Physics
- Faculty of Polish Studies
- Faculty of Political Science and International Studies
- Faculty of Psychology
- Faculty of Sociology

## UW FACTS & FIGURES

UW is a public, comprehensive and research intensive university. It provides education and carries out research in the fields of humanities, social and natural sciences, as well as numerous interdisciplinary projects, including subjects in medical or technical sciences.

**7 500** employees

**40 500** students

**2 500** doctoral candidates

**4 800** international students  
and doctoral candidates

UW is an institution open to the international community. It aims to be an attractive and friendly place for international researchers and students. It is most popular among students from Belarus, China, France, Germany, Italy, Spain, Turkey and Ukraine.

**24** faculties

**30** academic and research units

**4** Doctoral Schools

- Doctoral School of Humanities
- Doctoral School of Social Sciences
- Doctoral School of Exact and Natural Sciences
- Interdisciplinary Doctoral School





## EDUCATION

The quality of education at UW is confirmed by the annual appraisals which show that the majority of students are satisfied with their selection of the university and the education programme. The University's strongest points are: its prestige, development opportunities, the study environment. The quality of education is also confirmed by research conducted with the University's graduates. Results demonstrate that having a diploma from UW is a definite asset in the job market; 94% of respondents have found employment after graduation.

over **100** programmes of 1<sup>st</sup>, 2<sup>nd</sup> and long cycle – uniform Master's studies

**27** English-language programmes

**22** double degree programmes run by UW and international partners

interdisciplinary programmes that enable students to develop their curriculum individually

programmes of doctoral studies in  
**4** Doctoral Schools

each doctoral candidate has an opportunity to follow a complete learning pathway in English

over **100** postgraduate programmes  
Master of Business Administration (MBA) and Master of Law (LLM) programmes

Open University courses

### 27 ENGLISH-LANGUAGE PROGRAMMES

- American studies (1<sup>st</sup>, 2<sup>nd</sup> cycle)
- Archaeology (1<sup>st</sup>, 2<sup>nd</sup> cycle)
- Chemistry (2<sup>nd</sup> cycle)
- Cognitive Science (2<sup>nd</sup> cycle)
- Data Science and Business Analytics (2<sup>nd</sup> cycle)
- English Studies (1<sup>st</sup>, 2<sup>nd</sup> cycle)
- Environmental Management (2<sup>nd</sup> cycle)
- European Politics and Economics (1<sup>st</sup> cycle)
- Finance, International Investments and Accounting (1<sup>st</sup> cycle)
- Humanitarian Action (2<sup>nd</sup> cycle)
- International Business Program (2<sup>nd</sup> cycle)
- International Economics (2<sup>nd</sup> cycle)
- International Relations (1<sup>st</sup>, 2<sup>nd</sup> cycle)
- International Studies in Philosophy (1<sup>st</sup> cycle)
- Master in Food Systems (2<sup>nd</sup> cycle)
- Oriental Studies – Inner Asia: Mongolian and Tibetan Studies (2<sup>nd</sup> cycle)
- Physics (2<sup>nd</sup> cycle)
- Political Science (1<sup>st</sup>, 2<sup>nd</sup> cycle)
- Psychology (uniform Master's cycle)
- Quantitative Finance (2<sup>nd</sup> cycle)
- Sustainable Development (2<sup>nd</sup> cycle)
- Teaching English to Young Learners (2<sup>nd</sup> cycle)



## RESEARCH

UW is a Polish leader in attracting external funding for research – both under the European Union and domestic grant schemes.

**3 800** academic teachers

**2 500** doctoral candidates

**180 million EUR** subsidies for maintenance and development of didactic and research potential

**1 600** projects financed from national or international research grants

ca. **100** Horizon 2020 grants

**16** European Research Council grants

**23** spin-off companies

**1 000** international partners

**680** universities that work with UW under bilateral agreements

**100** international societies and research networks with UW as a member

### RESEARCH ON SOCIALLY IMPORTANT ISSUES

UW scientists conduct research on socially important issues in cooperation with scientific centres from all over the world. In addition to the flagship programmes under the 4EU+ Alliance, such projects include those implemented within the EIT Food – European Knowledge and Innovation Community in the food sector, which forms part of the European Institute of Innovation and Technology. UW has been a member of EIT Food since 2016.

In 2018, UW also initiated a project under the framework of yet another EU Knowledge and Innovation Community – EIT Climate, whose objective is to mitigate and adapt to the consequences of climate change. In 2019, the university was awarded the status of project partner within EIT Raw Materials – a raw materials community.



### “EXCELLENCE INITIATIVE – RESEARCH UNIVERSITY”

Following the competition of the Ministry of Science and Higher Education entitled “Excellence Initiative – Research University”, the University of Warsaw was granted research university status for 2020-2026. The UW will receive 10% extra on a state subsidy. This will boost the development of 5 priority research areas and the execution of 70 measures specified in the application, including programmes supporting the development of employees, doctoral candidates and students.





# DEVELOPMENT

UW continues to pursue the following strategic objectives:

- strengthening the position as a Poland's leading research centre,
- gaining international recognition,
- maintaining its high ranking among the Central European universities and developing cooperation with the continent's top universities,
- continuing a strong impact on its environment, in particular by addressing socially significant research topics.

## MULTI-ANNUAL DEVELOPMENT PLAN

UW is implementing the multi-annual development plan "University of Warsaw 2016-2025." Its main objective is:

- to enhance the potential of the humanities and social sciences and to integrate them into innovative experimental programmes,
- to strengthen the international position of the university and increase its role in fostering social and economic transformations.

To facilitate reaching of these goals, the programme includes the construction of new buildings and the expansion and reconstruction of existing facilities.

## INTEGRATED DEVELOPMENT PROGRAMME

2018 marked the beginning of the implementation of the university's four-year Integrated Development Programme (ZIP).

The programme is designed to support the comprehensive development of the university and includes:

- development of new fields of study and modification of existing curricula,
- enriching the range of curricula, courses and scholarship programmes for doctoral candidates,
- organization of classes and training sessions to improve the skills of students and employees,
- development of university management IT tools.



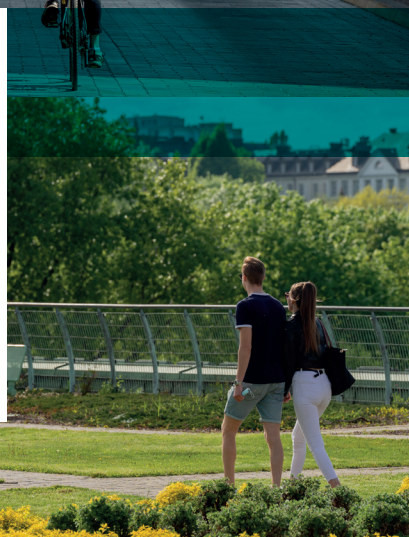


## **POLAND**

– the 9<sup>th</sup> largest country in Europe, a member of the European Union, the Schengen Area, the European Higher Education Area and the Bologna Process

## **WARSAW**

– the capital city of Poland, the political, economic, social and cultural centre of the country, one of the most dynamically developing cities in Europe



### **ADMISSIONS OFFICE**

🏠 [www.rekrutacja.uw.edu.pl/en](http://www.rekrutacja.uw.edu.pl/en)

### **INTERNATIONAL RELATIONS OFFICE**

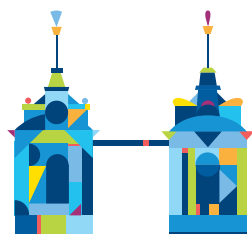
🏠 [www.iro.uw.edu.pl](http://www.iro.uw.edu.pl)

### **OFFICE FOR INTERNATIONAL RESEARCH AND LIAISON**

🏠 [www.bmpb.uw.edu.pl](http://www.bmpb.uw.edu.pl)

### **WELCOME POINT**

🏠 [www.welcome.uw.edu.pl](http://www.welcome.uw.edu.pl)



### **UNIVERSITY OF WARSAW**

Krakowskie Przedmieście Street 26/28

00-927 Warsaw

(+48) 22 55 20 000

🏠 [www.en.uw.edu.pl](http://www.en.uw.edu.pl)

🐦 UniWarszawski

f fanpageUW



HR EXCELLENCE IN RESEARCH